



• The Ultimate in Data Collection Flexibility •

TimeTrak® Systems Inc. offers the widest variety of data collection hardware and software. We understand how important it is to match your system to your company's working environment. While others play down this issue or offer only data entry packages of their own manufacture, TimeTrak Systems Inc. offers our own data collection systems plus those from other top manufacturers. We also support hardware equipment already installed and we interface with systems such as computerized access control installations.

TimeTrak Systems Inc. has long experience with communication programs supporting DOS, Windows, Novell and Net Bios Networks, UNIX, AIX, Solaris, HP-UX, Client/Server, and dozens of other operating systems.

TimeTrak Systems Inc. supports data collection from traditional time cards, barcode or magstripe badges, and biometric systems; from nearly any source you can imagine.

Use one or more of these data collection systems



Read your current badges with the TimeTrak System's family of online and offline automated barcode, magstripe, Weigand, proximity or PIN entry readers.



Record attendance and scheduling status on individual on-screen clocks with ClocTrak®, the software option for data collection. In addition, ClocTrak offers an Employee Information Kiosk.



Call in your attendance and scheduling status with VTrak®, TimeTrak Systems' software and hardware telephone interface.



Use biometric devices to report attendance — voice, fingerprint, hand shape, retina, etc. Verify ID numbers by a unique physical aspect, assuring the true identity of the person punching In or Out.

Other data collection alternatives



Collect data the portable way in temporary or mobile job situations with the Hand Held Collection Unit.



Accept time and attendance transactions from access control systems, and communicate the data to TimeTrak software.



Collect more data the conventional way, but track it better with Time Card Data Collection Terminals.



• Mix and Match Data Collection Options to Meet any Challenge •



Add More TimeTrak® Data Collection Terminals When and Where Needed

Enhance time and data collection using your current badges

- Easily set user-defined options permit use of one-badge technology for all your needs. TimeTrak Systems terminals read your existing badges and most currently-used badges — even access control/parking badges.
- When your staffing requirements expand, your time and attendance system can also expand, and easily. TimeTrak strives to maintain support for and compatibility with all older terminals as you add newer terminals of any type.

Mix and Match biometric, barcode, magstripe, prox card, and simple PIN entry

- Pick the different data collection terminals you need, mixing and matching readers and communication choices, meeting any challenge you may have.
- Place the data collection terminals you need where you need them, and assign employees to all data collection terminals, or limit employees to any number of specific units you desire.

Configure the terminals to collect other types of data, too

- TimeTrak Systems terminals can also be of assistance if you require data collection for MRP software systems, or for TQM or ISO 9000 systems, as well as for time and attendance. You can configure the family of terminals to collect such data as the number of pieces produced or rejected per worker. This data can be handled individually or combined into up to 10 different data collection files. User-defined prompts and multiple validation methods make TimeTrak Systems ideal for customized applications.

Employees can check key data

- Employees can receive group or individual messages and check such data as paid/payable hours, punch history, vacation hours available, sick hours available, etc.

Terminals make supervisors' jobs easier

- These terminals make the job easier and infinitely more flexible for supervisory personnel. Schedules can be enforced right at the terminals and restrictions can be applied to multiple terminals usage; terminals accommodate seven days of schedules. Managers and supervisors can modify records to add missing punches or swipes, add hours for vacations, sick days,

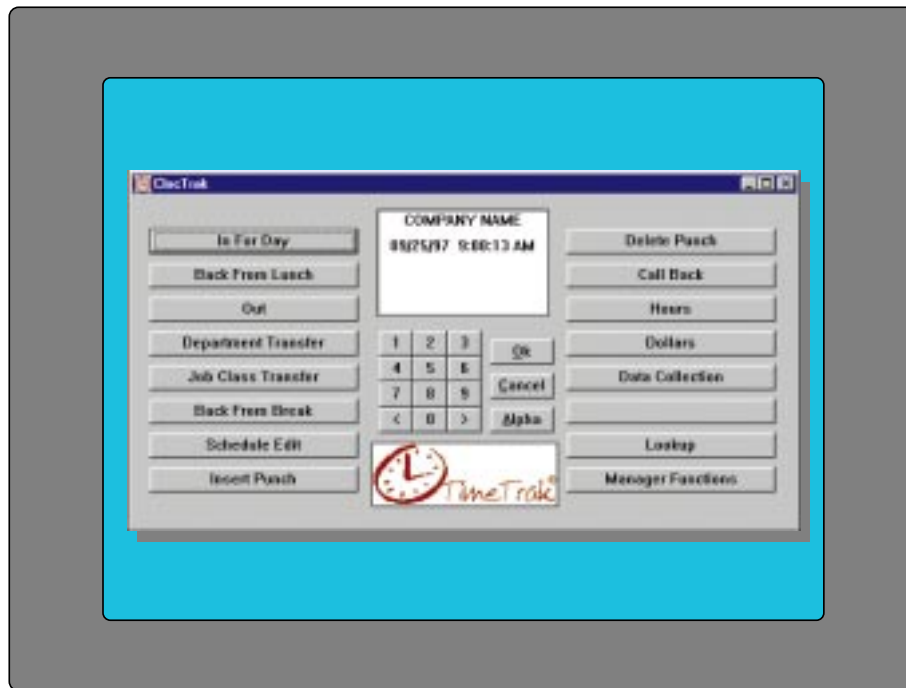
business travel, etc. They can also override restrictions. The terminals provide the ultimate in badge-generated data handling. Each standard terminal supports 10 user-defined function keys with 10 unique levels of prompting and validation. There's a contact relay for triggering door releases or bells, as well as serial ports for paper receipts, a hard copy log of all data entries or localized printing, and much more.

• And there's more •

- Choose from barcode, magstripe, proximity, biometric or PIN entry
- Heavy-duty construction for long life
- Ten-year lithium battery RAM backup
- Internal UPS provides up to 4 hours (200+ punch) of full operation
- Connections for wands and laser guns
- Communication boards: RS-232, RS-485, internal modem, RF, and the Ethernet TCP/IP on line option.



• ClocTrak,[®] the Software Option to Hardware Data Collection •



Turn your computer screen into a sophisticated collection and employee information retrieval system

Do it all, right on your computer screen

- Everyone's workstation, dumb terminal or PC can become a high-tech time clock with ClocTrak; the keyboard, mouse, bar code wedge or wand-driven software data entry tool. This option is the perfect answer in situations where hardware data collection systems can't be cost-justified, or where you need to match collection systems to special workforce environments, such as computer-friendly white collar staffs already trained and equipped for a software-controlled method of data entry. With ClocTrak you can integrate time reporting and recording into some employees' daily computer-aided functions while addressing other groups' needs differently. Or use the on-screen system at remote sites, for the easiest to install, lowest-cost time and attendance collection alternative.

Let employees retrieve their own information

- At your screen or an *Employee Information Kiosk*, you can do much more than punch in arrivals/ departures/breaks or make labor transfers/vacation requests. Without disturbing supervisors or Payroll, view current accurate information, including: Time Card; Paid Hours To Date; Schedule for Pay Period; Next Pay Period's Schedule; Future Schedule Changes (e.g., Vacations/Business Trips/Early Arrivals); Prior Pay Period's Hours Paid; Available Sick/Vacation/etc., Benefit Accruals; Retrieve Messages; and Most-Recent-12-Months-at-a-Glance Exceptions/Benefit Hours.

Supports multiple platforms for local use

- ClocTrak is available in many platforms and operating systems, including DOS, Windows, Novell and Net Bios Networks, UNIX, AIX, Solaris, HP-UX, and Client/Server.

ClocTrak® for remote sites

- TimeTrak Systems offers an intranet/internet solution, as well as a pollable DOS version of ClocTrak (minimum 386 PC with a color SVGA monitor). The remote version of ClocTrak provides all the features and benefits of the 200 Series hardware data collection terminals on a PC. Polling of transactions and downloading of information to the remote site will not interfere with employees use of the remote ClocTrak product.

Build up to 11 user-defined data files

- ClocTrak is fully user designed. All prompts and displays are easily customized, making the system as straightforward or detailed as you like. Build up to eleven different data files, using one for time and attendance and the rest for HR, TQM, production control, or other information systems.

•And there's more•

- 12 or 24 hour time/date format; host set
- 14 software defined function keys
- Conventional or extended RAM memory
- Conforms to all monitor standards.



•VTrak,[®] the Telephone Solution to Data Collection•



Turn your telephone system into a sophisticated data collection network and missed-event reporting system

- Employees can report their time and attendance transactions just by punching in a phone number and responding to a series of voice prompts. VTrak, the data collection system, connects directly to a host computer. Add the Caller ID option from your phone company, and VTrak identifies the source of the call and validates the originating number against a list of known numbers. If Caller ID number is not available, VTrak accepts the call and marks the record accordingly. With voice verification you can be assured of both the caller's identity and location.

Just phone in and follow the voice prompts

- It's this easy: Up to four employees at a time (in the standard configuration) can punch in a phone number or extension. Callers are then instructed to enter a code for one of 99 possible transactions. Additional prompts are provided for each transaction. It is not necessary to wait for prompts to be completed. Data entry can be initiated and completed as quickly as one can

enter the appropriate numbers. When data entry is complete, employees can listen to their entries or just accept the transaction and hang up. Voice recognition is also available for non-touch tone phones.

Report hours and retrieve voice mail

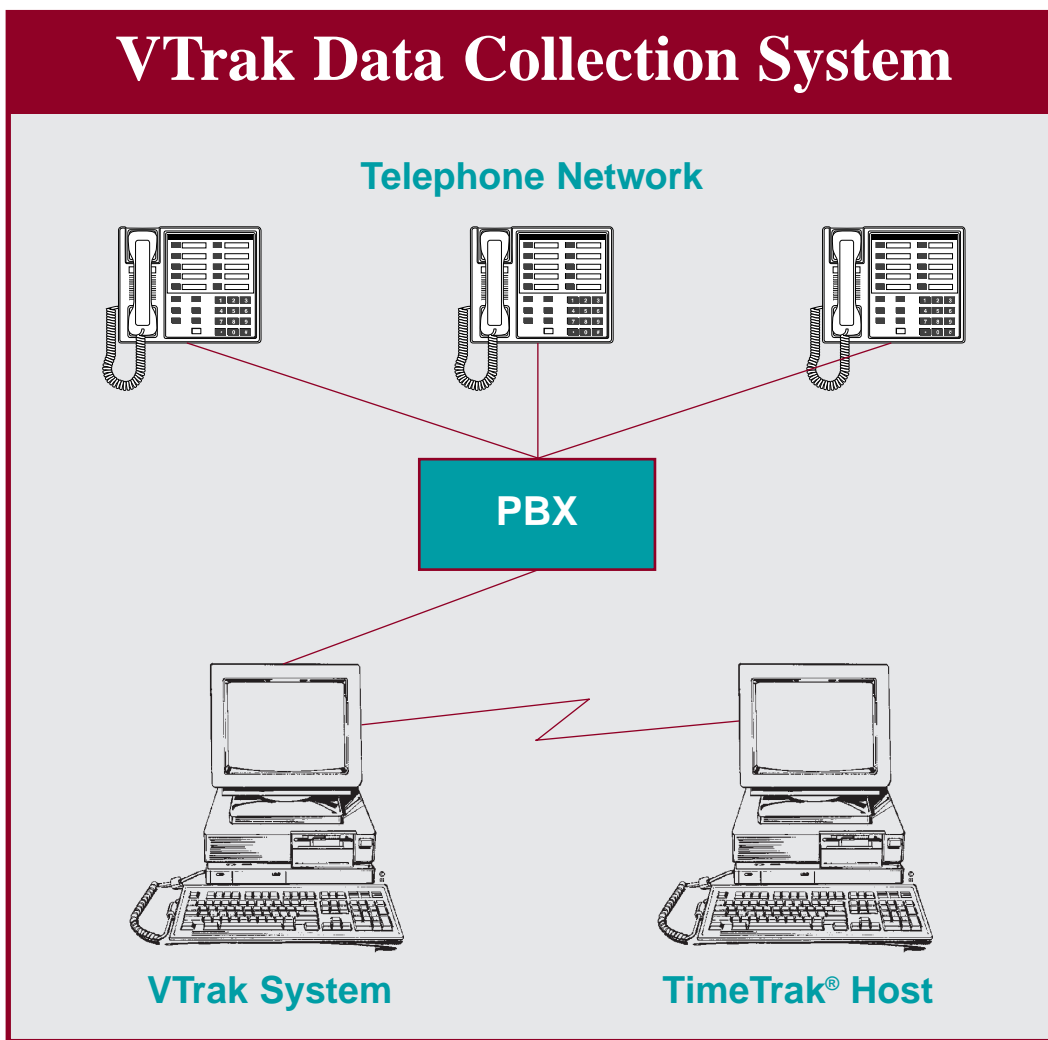
- Through this process, employees can report their arrival for work, their departure, return from lunch or break, a department or cost center transfer, or a job class transfer. They can also input hours and call backs. Voice mail messages can be left and retrieved.

Catch missed events when they happen

- With VTrak, it is easy to schedule which employees should call from which phones at what times. If a call is not received within a specified grace period, VTrak will page the employee's supervisor.

• VTrak technical requirements •

- Dedicated IBM compatible WIN95 PC 486, 8Mb RAM and VGA
- One or more internal slots available, depending on need and configuration
- Two serial ports and one parallel port for communications.





• Select The Biometric Solution Best Suited to Your Environment. Or — Mix and Match •



Biometric Identification Available



Verification Models

Make data collection simple, fraud-proof and cost-effective

Use Biometric Identification Where Needed to Eliminate Problems and Costs

- These hardware solutions eliminate problems from lost or forgotten badges while also eliminating costs for initial and replacement badges. Because all employees carry their unique IDs with them, you also eliminate the problem of buddy punching – employees punching or swiping in for each other. Desired security levels can be set to allow for variation in readings compared to stored validation data.

Breakthrough Biometric Identification Now Available as Well as Verification

- In identify models, employees simply place their finger on the scanner and the data collection terminal identifies the employee from among up to 1000 employees at each terminal – eliminating the need for employees to first enter PIN numbers or swipe badge cards. In verify models employees enter their ID, by PIN or Badge swipe, and their scan is compared and verified against the scan on file in the clock for that ID.

Biometric Finger Scanner Avoids Fingerprints and Their Inherent Problems

- The Finger Scanner Biometric terminal is easy to use. The scanner reads the resistance at several locations of the live sub-dermal layer of the skin and verifies against readings stored in the terminal for that employee, eliminating the problems found with finger print readers – no rejections due to minor cuts or scrapes, dirty fingers, burns or nearly sanded off finger prints. Employees may enroll multiple fingers providing immediate alternatives should a finger become deeply cut and not verifiable.
- Biometric solutions do not have to limit your terminal features and options. TimeTrak offers finger reader models that provide all the options and benefits available from our standard badge readers, including messaging, downloading of seven days of individual schedules for each employee, ten levels of data entry (with multiple verification methods off each key function), multiple supervisor functions, and the ability to view Paid/Payable Hours, Accruals, Schedules, and Previous Punches at the clock.

•And there's more•

Biometric Finger Scanner

- Identification of identities of up to 1000 employees
- Verification of identities of up to 4000 employees
- Automatic daylight savings adjustments
- Optional contact relay for bells and door releases
- 10 year lithium battery backup system
- Communications: RS-232, RS-485, Ethernet TCP/IP, Internal Modem, and RF.
- Verification time: less than two seconds (under one second typical)



HandPunch

Employees enter their ID numbers on the keypad and place a hand in the unit on the platen. The unit measures the size and shape of the employees' hand and fingers, allowing some variance for changes like rings and fingernails. Optional magstripe card readers available to enter ID.

- Verifies identities of up to 256 employees (expandable to 18,000)
- Automatic daylight savings adjustment
- Optional contact relay for bells and door releases
- 5 year lithium battery for two hours of full power operation
- Communications: RS-485, Modem and Ethernet
- Verification time: less than two seconds



Other biometric technologies supported as well

- User friendly voice verification system: VTrak is a fraud-proof method of data collection, combining voice verification with Caller-ID. It provides absolute proof for audits, governmental reporting, and requirements for insurance payment for home health aide workers. For entries where the voice verification fails the transaction can still be processed, and a "Verification Fail" code is attached to the employees time record in TimeTrak.
- TimeTrak Systems is constantly adding support for other suppliers of biometric collection solutions. These include retina readers, iris readers, facial shape readers, and others. As new technologies become cost effective, TimeTrak Systems will either make them available or support interfaces to them.





• Other Collection Alternatives •



Collect data the portable way in mobile or temporary job situations with the Hand Held collection unit

For temporary or mobile work situations

- Ideal when a time and attendance data collection job is temporary, for mobile work forces, or where electrical power is unavailable to operate data terminals or time clocks.

Rugged, waterproof, shock-resistant unit withstands temperature extremes

- Fully compatible with all TimeTrak Systems Series of data collection terminals features, the rugged, waterproof, shock-resistant Hand Held unit can withstand temperatures of from -40°F to 140°F. The display screen is 16 x 25 characters.

Key-in data or use wand or scanner

- Portable data collection has never been easier or more flexible. Enter data on time and attendance, labor distribution, and production on the unit's full alphanumeric keyboard, or use a wand or laser scanner. Look up such data as schedule, hours paid, messages, previous rings and tally counts — by employee — right on the Hand Held unit. It offers eight data collection functions and ten levels of data entry, and is downloadable for data entry validation.



Collect more data and track it better the traditional way with Time Card Data Collection Terminals

Keep time cards, but update the collection

- Some employees find it uncomfortable to give up traditional time cards. Or, work rules make change difficult or inadvisable. Now it's possible to keep the punch card entry method where necessary, while still expanding and automating data management. Meanwhile, other members of your workforce can use the more sophisticated hardware outlined elsewhere in this folder. Employees continue to see punches printed on their cards, so they know their hours are being recorded properly.

entries or printing deviations in red. The time card terminal features a 2,500 transaction buffer to accommodate workforces with employees requiring multiple punches throughout the work day.

Fast, reliable local or remote communications

- RS232/RS485 communications assure fast, reliable communications, either local or remote by modem, with TimeTrak software.

Lets supervisors prevent unauthorized work

- The time card unit not only supports time In and time Out punches, but also lets employees record department or job transfers, paid breaks, and other key data. Programmable zones allow supervisors to prevent unauthorized work activities by locking out



Accept time and attendance transactions from Weigand, proximity and badge access control systems, and communicate the data to TimeTrak® software

Long-established partnerships

- TimeTrak Systems has long-established strategic relationships with suppliers in both the ID and access control fields, and has worked productively on cooperative data collection installations across

the country. We're ideally suited to help you set up a comprehensive data collection system with both the latest one-card technology and with a unique degree of flexibility that enables us to respond to your organization's special workforce environment.